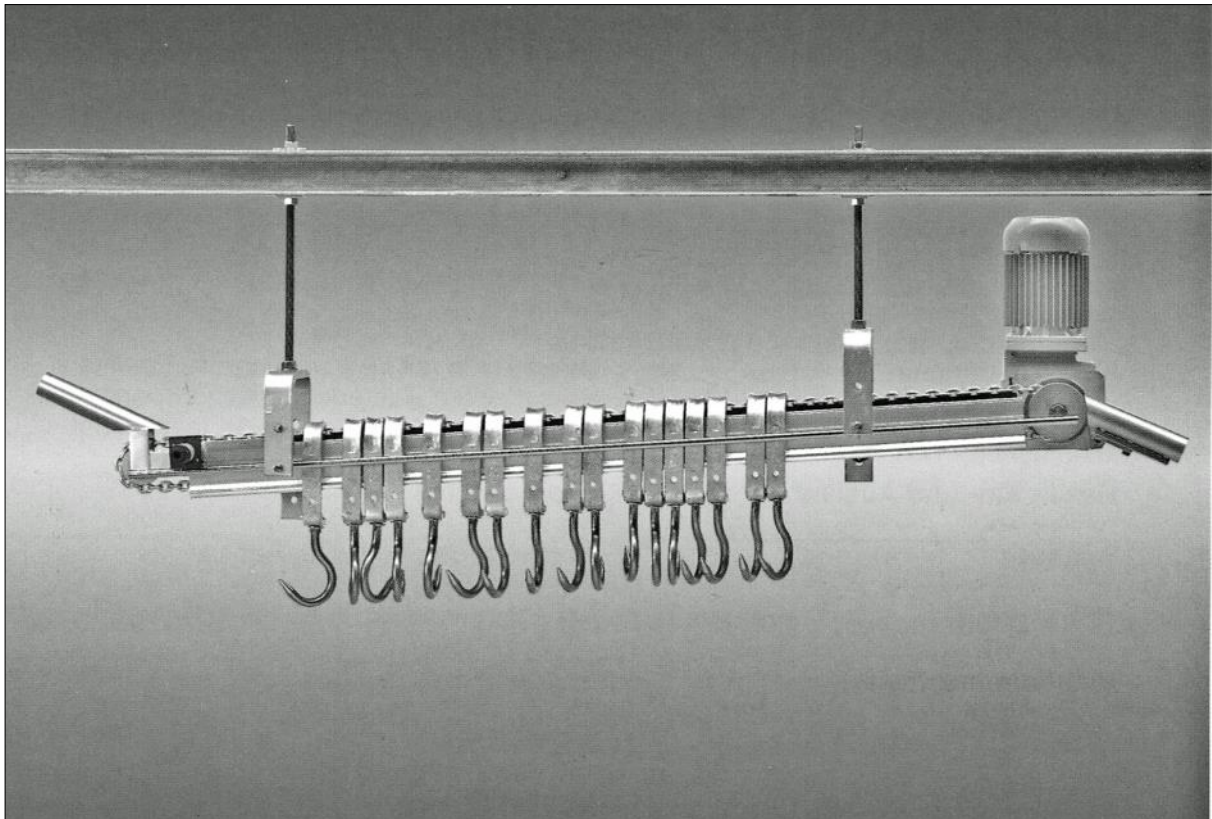


50
JAHRE
ERFAHRUNG

MARCHEL[®]

Marchel Empty Hooks Transport System

Transport, storing and controlling of slaughtering hooks made by modern IT



Proved technology ✓

Comfortable use ✓

Efficiently ✓



Operation destription

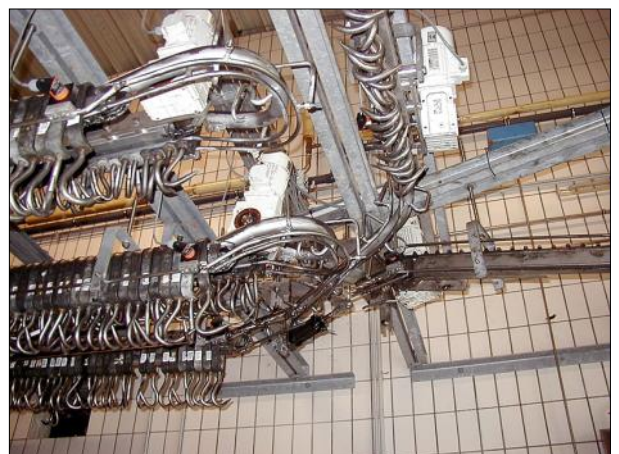
Conveyors and elevators for empty slaughtering hooks will be assembled in a row. Different length are possible. The hooks will continously be stacked up, stored and delivered to the needed places on demand..

The special advantage of Marchel System is: on the conectors between two units (bow or straight tube) on the beginning and on the end is installed an inductive initiator. It controls the transport on this part. Errors will be recognized early, before the system will get damage.

Every conveyor and elevator can be changed in programmable details of use by user. This are for instance count of clock frequency, lenght of frequency, weiting time, alert functions by urgent need of hooks etc.

Adbantages you can profit of!

- 1. Individual planing**
- 2. Fullautomatically function**
- 3. Transportation, storage, pick up on different places and tendering on slaughter house or truck docking stations.**
- 4. High capacity**
- 5. Favouerable price-performance ratio**
- 6. Compact construction**
- 7. Use for eurohooks, cattleshooks or spreading hooks possible**
- 8. Less maintenance expenses**
- 9. Pare down of costs**
- 10. No problem to connect to other transport systems**
- 11. Quick installation**
- 12. User responsive**



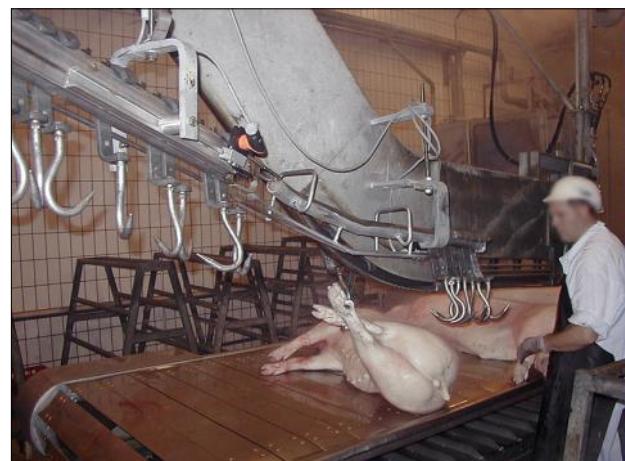
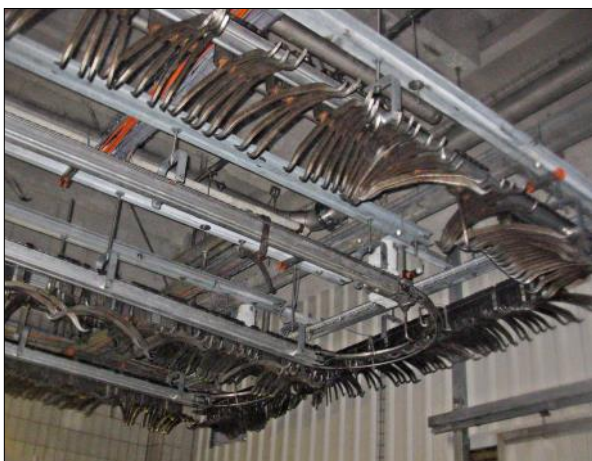
Equipment

- Full automatically control by PLC SIEMENS S7 1200
- Operation by comfortable touchpanel and optimized menu-drive (SIEMENS TP700)
- Connecting to control rooms possible (option)
- By assembled frequency converters with the conveyors it is possible to change the speed of transport hooks individual.
- The chain adjuster is working continuously. The rollers are made within ball bearings
- The mechanical linkages, bows and staright, are made by stainless steel
- Switches are also made by stainless steel and are working pneumatical
- Comfortable maintenance



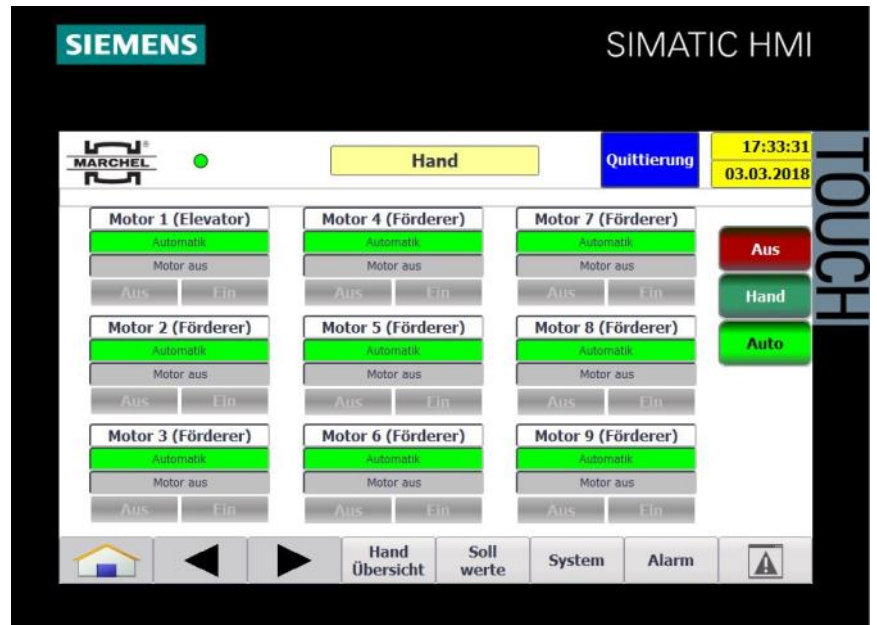
Special constructions

- Hook counter within printer. Additional possibility to fill in name of staff and number of license plate of truck
- Technical control of hooks and sort out unconformity hooks
- Hook turn construction

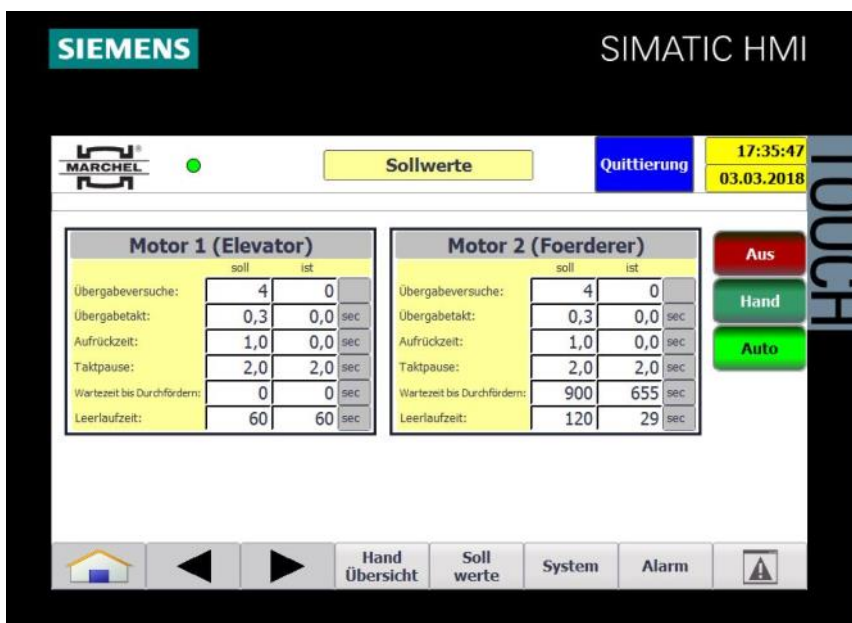




Technische Daten	
Voltage	400 V/50-60 Hz
Electricla power	0,55 kW
Turning moment	144 Nm
Max. length of conveyors	18 m
(Aluminium extrusion profile and galvanized round link chains)	
Max. length of elevators (Stainless steel profile and roller chains with cleat lugs)	15 m



Overview of conveyors



View of variation possibility of conveyors

Heinz Marchel GmbH & Co. KG
 Ringstraße 3
 49134 Wallenhorst
 GERMANY

Phone: +49 (0) 5407/8989-0
 Fax: +49 (0) 5407/8989-79

www.marchel.de
 E-Mail: info@marchel.de